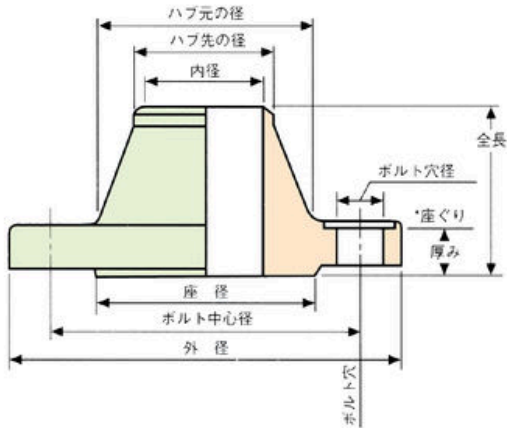


Futawa

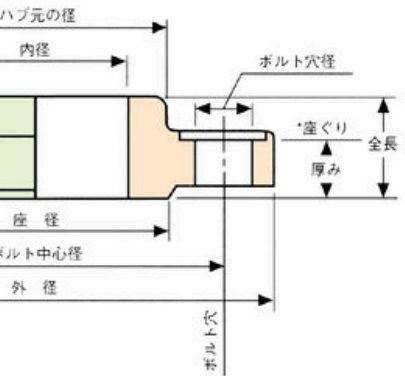
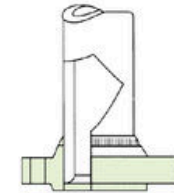
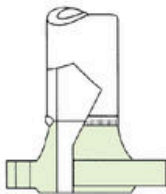
Brochure



WELDING NECK

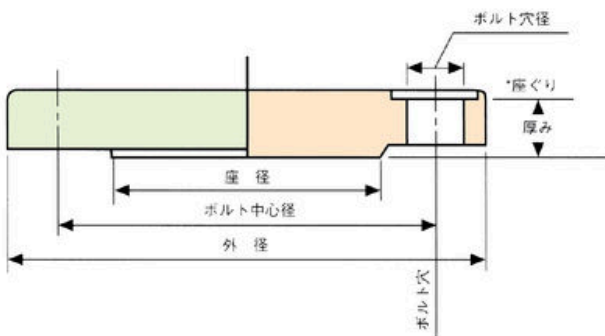


WELDING NECK FLANGE is butt welded to the pipe by hand or automatic welding with or without a back ring.

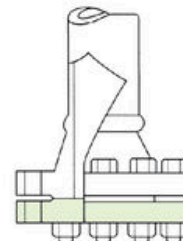


As the name suggests, a slip-on flange is a type of flange where a pipe is inserted into the flange and then welded at both the hub of the flange and the end of the pipe.

BLIND

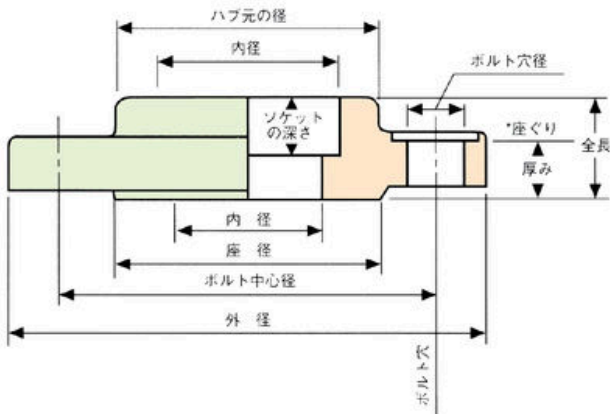


Blind flanges are used to close the openings of pipes, valves, and pressure vessels during piping. Especially in the case of large diameters, the internal pressure at the center is large, so the thickness, material, and bolt material of the flange must be higher than those of flanges with the same nominal pressure.

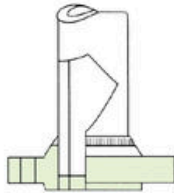


* If the back surface is finished, there is no need to perform countersinking.

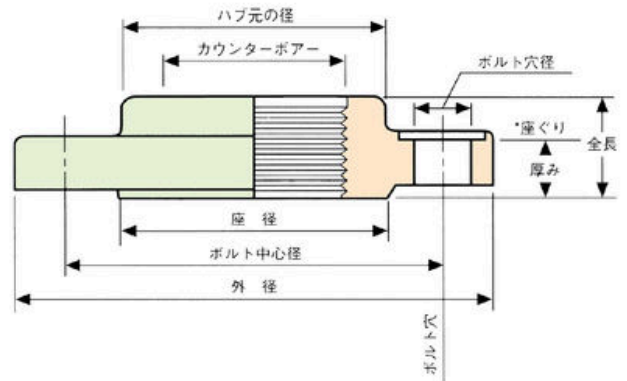
SOCKET-WELD



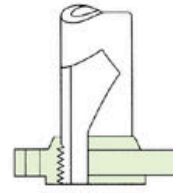
With a socket welding flange, the end of the pipe is inserted into the socket part inside the flange and then welded to the hub of the flange.



THREADED



Threaded flanges are attached by screwing them onto a twisted pipe.

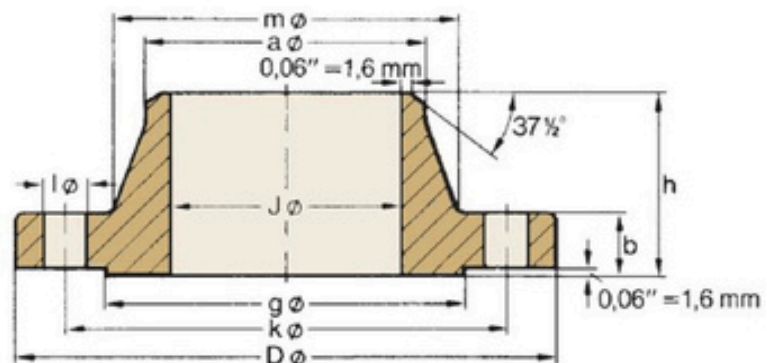




WELDING NECK FLANGES

150 lb/sq. in.

Welding Neck Flanges

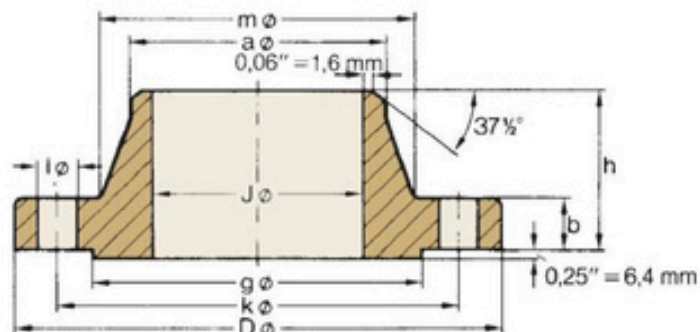


ASME B 16.5

Pipe	Flange					Hub		Raised Face	Drilling Template			Approx. Weight
Nom. Size	O D in. mm	D in. mm	J in. mm	b in. mm	h in. mm	a in. mm	m in. mm	g in. mm	Number	l in. mm	k in. mm	= Pounds Kilo
1/2"	0.84 21.3	3.50 88.9	0.62 15.7	0.44 11.2	1.88 47.8	0.84 21.3	1.19 30.2	1.38 35.1	4	0.62 15.7	2.38 60.5	1.1 0.48
3/4"	1.05 26.7	3.88 98.6	0.82 20.8	0.50 12.7	2.06 52.3	1.05 26.7	1.50 38.1	1.69 42.9	4	0.62 15.7	2.75 69.9	1.6 0.71
1"	1.315 33.4	4.25 108.0	1.05 26.7	0.56 14.2	2.19 55.6	1.32 33.5	1.94 49.3	2.00 50.8	4	0.62 15.7	3.12 79.2	2.2 1.01
1 1/4"	1.66 42.2	4.62 117.3	1.38 35.1	0.62 15.7	2.25 57.2	1.66 42.2	2.31 58.7	2.50 63.5	4	0.62 15.7	3.50 88.9	2.9 1.33
1 1/2"	1.90 48.3	5.00 127.0	1.61 40.9	0.69 17.5	2.44 62.0	1.90 48.3	2.56 65.0	2.88 73.2	4	0.62 15.7	3.88 98.6	3.8 1.72
2"	2.375 60.3	6.00 152.4	2.07 52.6	0.75 19.1	2.50 63.5	2.38 60.5	3.06 77.7	3.62 91.9	4	0.75 19.1	4.75 120.7	5.7 2.58
2 1/2"	2.875 73.0	7.00 177.8	2.47 62.7	0.88 22.4	2.75 69.9	2.88 73.2	3.56 90.4	4.12 104.6	4	0.75 19.1	5.50 139.7	9.1 4.11
3"	3.50 88.9	7.50 190.5	3.07 78.0	0.94 23.9	2.75 69.9	3.50 88.9	4.25 108.0	5.00 127.0	4	0.75 19.1	6.00 152.4	10.8 4.92
3 1/2"	4.00 101.6	8.50 215.9	3.55 90.2	0.94 23.9	2.81 71.4	4.00 101.6	4.81 122.2	5.50 139.7	8	0.75 19.1	7.00 177.8	13.4 6.08
4"	4.50 114.3	9.00 228.6	4.03 102.4	0.94 23.9	3.00 76.2	4.50 114.3	5.31 134.9	6.19 157.2	8	0.75 19.1	7.50 190.5	15.1 6.84
5"	5.563 141.3	10.00 254.0	5.05 128.3	0.94 23.9	3.50 88.9	5.56 141.2	6.44 163.6	7.31 185.7	8	0.88 22.4	8.50 215.9	18.9 8.56
6"	6.625 168.3	11.00 279.4	6.07 154.2	1.00 25.4	3.50 88.9	6.63 168.4	7.56 192.0	8.50 215.9	8	0.88 22.4	9.50 241.3	23.3 10.6
8"	8.625 219.1	13.50 342.9	7.98 202.7	1.12 28.4	4.00 101.6	8.63 219.2	9.69 246.1	10.62 269.7	8	0.88 22.4	11.75 298.5	38.8 17.6
10"	10.75 273	16.00 406.4	10.02 254.5	1.19 30.2	4.00 101.6	10.75 273.1	12.00 304.8	12.75 323.9	12	1.00 25.4	14.25 362.0	53.0 24.0
12"	12.75 323.8	19.00 482.6	12.00 304.8	1.25 31.8	4.50 114.3	12.75 323.9	14.38 365.3	15.00 381.0	12	1.00 25.4	17.00 431.8	80.4 36.5
14"	14.0 355.6	21.00 533.4	To be specified by purchaser	1.38 35.1	5.00 127.0	14.00 355.6	15.75 400.1	16.25 412.8	12	1.12 28.4	18.75 476.3	107 48.4
16"	16.0 406.4	23.50 596.9		1.44 36.6	5.00 127.0	16.00 406.4	18.00 457.2	18.50 469.9	16	1.12 28.4	21.25 539.8	134 60.6
18"	18.0 457.2	25.00 635.0		1.56 39.6	5.50 139.7	18.00 457.2	19.88 505.0	21.00 533.4	16	1.25 31.8	22.75 577.9	151 68.3
20"	20.0 508	27.50 698.5		1.69 42.9	5.69 144.5	20.00 508.0	22.00 558.8	23.00 584.2	20	1.25 31.8	25.00 635.0	186 84.5
24"	24.0 609.6	32.00 812.8		1.88 47.8	6.00 152.4	24.00 609.6	26.12 663.4	27.25 692.2	20	1.38 35.1	29.50 749.3	253 115

600 lb/sq. in.

Welding Neck Flanges



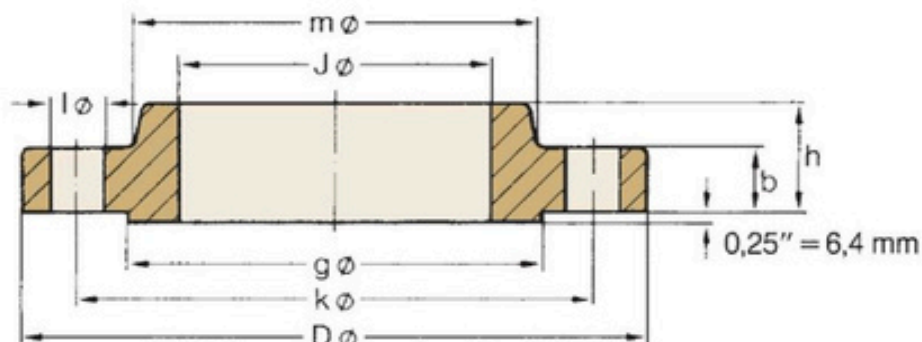
ASME B 16.5

Pipe		Flange				Hub		Raised Face	Drilling Template			Approx. Weight
Nom. Size	O D in. mm	D in. mm	J in. mm	b in. mm	h in. mm	a in. mm	m in. mm	g in. mm	Number	l in. mm	k in. mm	= Pounds Kilo
1/2"	0.84 21.3	3.75 95.2	To be specified by purchaser	0.56 14.2	2.06 52.3	0.84 21.3	1.50 38.1	1.38 35.1	4	0.62 15.7	2.62 66.5	1.9 0.87
3/4"	1.05 26.7	4.62 117.3		0.62 15.7	2.25 57.2	1.05 26.7	1.88 47.7	1.69 42.9	4	0.75 19.1	3.25 82.6	3.2 1.45
1"	1.315 33.4	4.88 123.9		0.69 17.5	2.44 62.0	1.32 33.5	2.12 53.8	2.00 50.8	4	0.75 19.1	3.50 88.9	3.9 1.76
1 1/4"	1.66 42.2	5.25 133.3		0.81 20.6	2.62 66.5	1.66 42.2	2.50 63.5	2.50 63.5	4	0.75 19.1	3.88 98.6	5.5 2.49
1 1/2"	1.90 48.3	6.12 155.4		0.88 22.4	2.75 69.9	1.90 48.3	2.75 69.8	2.88 73.2	4	0.88 22.4	4.50 114.3	7.7 3.49
2"	2.375 60.3	6.50 165.1		1.00 25.4	2.88 73.2	2.38 60.5	3.31 84.0	3.62 91.9	8	0.75 19.1	5.00 127.0	9.6 4.36
2 1/2"	2.875 73.0	7.50 190.5		1.12 28.4	3.12 79.2	2.88 73.2	3.94 100.0	4.12 104.6	8	0.88 22.4	5.88 149.4	14.2 6.43
3"	3.50 88.9	8.25 209.5		1.25 31.8	3.25 82.6	3.50 88.9	4.62 117.3	5.00 127.0	8	0.88 22.4	6.62 168.1	18.8 8.53
3 1/2"	4.00 101.6	9.00 228.6		1.38 35.1	3.38 85.9	4.00 101.6	5.25 133.4	5.50 139.7	8	1.00 25.4	7.25 184.2	23.6 10.7
4"	4.50 114.3	10.75 273.1		1.50 38.1	4.00 101.6	4.50 114.3	6.00 152.4	6.19 157.2	8	1.00 25.4	8.50 215.9	38.3 17.4
5"	5.563 141.3	13.00 330.2		1.75 44.5	4.50 114.3	5.56 141.2	7.44 189.0	7.31 185.7	8	1.12 28.4	10.50 266.7	64.3 29.2
6"	6.625 168.3	14.00 355.6		1.88 47.8	4.62 117.3	6.63 168.4	8.75 222.3	8.50 215.9	12	1.12 28.4	11.50 292.1	76.9 34.9
8"	8.625 219.1	16.50 419.1		2.19 55.6	5.25 133.4	8.63 219.2	10.75 273.1	10.62 269.7	12	1.25 31.8	13.75 349.3	119 53.9
10"	10.75 273	20.00 508.0		2.50 63.5	6.00 152.4	10.75 273.1	13.50 342.9	12.75 323.9	16	1.38 35.1	17.00 431.8	191 86.5
12"	12.75 323.8	22.00 558.8		2.62 66.5	6.12 155.4	12.75 323.9	15.75 400.1	15.00 381.0	20	1.38 35.1	19.25 489.0	227 103
14"	14.0 355.6	23.75 603.3		2.75 69.9	6.50 165.1	14.00 355.6	17.00 431.8	16.25 412.8	20	1.50 38.1	20.75 527.1	269 122
16"	16.0 406.4	27.00 685.8		3.00 76.2	7.00 177.8	16.00 406.4	19.50 495.3	18.50 469.9	20	1.62 41.1	23.75 603.3	374 170
18"	18.0 457.2	29.25 743.0		3.25 82.6	7.25 184.2	18.00 457.2	21.50 546.1	21.00 533.4	20	1.75 44.5	25.75 654.1	449 204
20"	20.0 508	32.00 812.8		3.50 88.9	7.50 190.5	20.00 508.0	24.00 609.6	23.00 584.2	24	1.75 44.5	28.50 723.9	560 254
24"	24.0 609.6	37.00 939.8		4.00 101.6	8.00 203.2	24.00 609.6	28.25 717.6	27.25 692.2	24	2.00 50.8	33.00 838.2	789 358



SLIP-ON FLANGES

600 lb/sq. in. Slip-on Flanges



ASME B 16.5

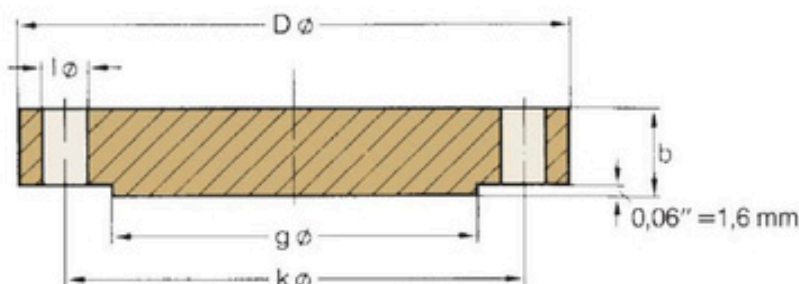
Pipe		Flange				Hub	Raised Face	Drilling Template			Approx. Weight
Nom. Size	O D in., mm	D in., mm	J in., mm	b in., mm	h in., mm	m in., mm	g in., mm	Number	l in., mm	k in., mm	≈ Pounds Kilo
1/2"	0,84 21,3	3,75 95,3	0,88 22,4	0,56 14,2	0,88 22,4	1,50 38,1	1,38 35,1	4	0,62 15,7	2,62 66,5	1,6 0,74
3/4"	1,05 26,7	4,62 117,3	1,09 27,7	0,62 15,7	1,00 25,4	1,88 47,7	1,69 42,9	4	0,75 19,1	3,25 82,6	2,8 1,27
1"	1,315 33,4	4,88 124,0	1,36 34,5	0,69 17,5	1,06 26,9	2,12 53,8	2,00 50,8	4	0,75 19,1	3,50 88,9	3,3 1,52
1 1/4"	1,66 42,2	5,25 133,4	1,70 43,2	0,81 20,6	1,12 28,4	2,50 63,5	2,50 63,5	4	0,75 19,1	3,88 98,6	4,5 2,03
1 1/2"	1,90 48,3	6,12 155,4	1,95 49,5	0,88 22,4	1,25 31,8	2,75 69,9	2,88 73,2	4	0,88 22,4	4,50 114,3	6,5 2,96
2"	2,375 60,3	6,50 165,1	2,44 62,0	1,00 25,4	1,44 36,6	3,31 84,1	3,62 91,9	8	0,75 19,1	5,00 127,0	8,0 3,62
2 1/2"	2,875 73,0	7,50 190,5	2,94 74,7	1,12 28,4	1,62 41,1	3,94 100,1	4,12 104,6	8	0,88 22,4	5,88 149,4	11,6 5,28
3"	3,50 88,9	8,25 209,6	3,57 90,7	1,25 31,8	1,81 46,0	4,62 117,3	5,00 127,0	8	0,88 22,4	6,62 168,1	15,4 7,00
3 1/2"	4,00 101,6	9,00 228,6	4,07 103,4	1,38 35,1	1,94 49,3	5,25 133,4	5,50 139,7	8	1,00 25,4	7,25 184,2	19,5 8,84
4"	4,50 114,3	10,75 273,1	4,57 116,1	1,50 38,1	2,12 53,8	6,00 152,4	6,19 157,2	8	1,00 25,4	8,50 215,9	31,9 14,5
5"	5,563 141,3	13,00 330,2	5,66 143,8	1,75 44,5	2,38 60,5	7,44 189,0	7,31 185,7	8	1,12 28,4	10,50 266,7	53,7 24,4
6"	6,625 168,3	14,00 355,6	6,72 170,7	1,88 47,8	2,62 66,5	8,75 222,3	8,50 215,9	12	1,12 28,4	11,50 292,1	63,2 28,7
8"	8,625 219,1	16,50 419,1	8,72 221,5	2,19 55,6	3,00 76,2	10,75 273,1	10,62 269,7	12	1,25 31,8	13,75 349,3	95,6 43,4
10"	10,75 273	20,00 508,0	10,88 276,4	2,50 63,5	3,38 85,9	13,50 342,9	12,75 323,9	16	1,38 35,1	17,00 431,8	155 70,3
12"	12,75 323,8	22,00 558,8	12,88 327,2	2,62 66,5	3,62 91,9	15,75 400,1	15,00 381,0	20	1,38 35,1	19,25 489,0	186 84,2
14"	14,0 355,6	23,75 603,3	14,14 359,2	2,75 69,9	3,69 93,7	17,00 431,8	16,25 412,8	20	1,50 38,1	20,75 527,1	217 98,7
16"	16,0 406,4	27,00 685,8	16,16 410,5	3,00 76,2	4,19 106,4	19,50 495,3	18,50 469,9	20	1,62 41,1	23,75 603,3	313 142
18"	18,0 457,2	29,25 743,0	18,18 461,8	3,25 82,6	4,62 117,3	21,50 546,1	21,00 533,4	20	1,75 44,5	25,75 654,1	381 173
20"	20,0 508	32,00 812,8	20,20 513,1	3,50 88,9	5,00 127,0	24,00 609,6	23,00 584,2	24	1,75 44,5	28,50 723,9	485 220
24"	24,0 609,6	37,00 939,8	24,25 616,0	4,00 101,6	5,50 139,7	28,25 717,6	27,25 692,2	24	2,00 50,8	33,00 838,2	687 312



BLIND FLANGES

150 lb/sq. in.

Blind Flanges

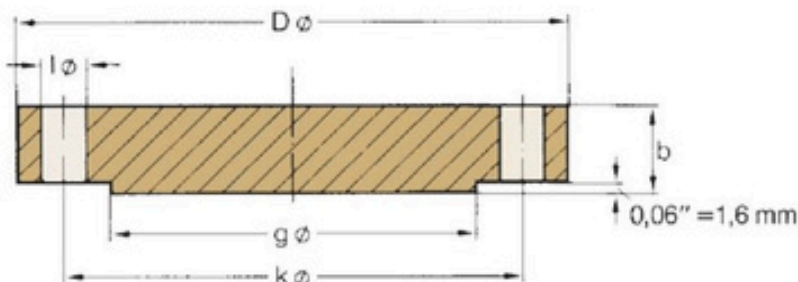


ASME B 16.5

Pipe		Flange		Raised Face	Drilling Template			Approx. Weight
Nominal Size	O D in. mm	D in. mm	b in. mm	g in. mm	Number	l in. mm	k in. mm	= Pounds Kilo
1/2"	0.84 21.3	3.50 88.9	0.44 11.2	1.38 35.1	4	0.62 15.7	2.38 60.5	0.9 0.42
3/4"	1.05 26.7	3.88 98.6	0.50 12.7	1.69 42.9	4	0.62 15.7	2.75 69.9	1.3 0.61
1"	1.315 33.4	4.25 108.0	0.56 14.2	2.00 50.8	4	0.62 15.7	3.12 79.2	1.9 0.86
1 1/4"	1.66 42.2	4.62 117.3	0.62 15.7	2.50 63.5	4	0.62 15.7	3.50 88.9	2.6 1.17
1 1/2"	1.90 48.3	5.00 127.0	0.69 17.5	2.88 73.2	4	0.62 15.7	3.88 98.6	3.4 1.53
2"	2.375 60.3	6.00 152.4	0.75 19.1	3.62 91.9	4	0.75 19.1	4.75 120.7	5.3 2.42
2 1/2"	2.875 73.0	7.00 177.8	0.88 22.4	4.12 104.6	4	0.75 19.1	5.50 139.7	8.7 3.94
3"	3.50 88.9	7.50 190.5	0.94 23.9	5.00 127.0	4	0.75 19.1	6.00 152.4	10.9 4.93
3 1/2"	4.00 101.6	8.50 215.9	0.94 23.9	5.50 139.7	8	0.75 19.1	7.00 177.8	13.6 6.17
4"	4.50 114.3	9.00 228.6	0.94 23.9	6.19 157.2	8	0.75 19.1	7.50 190.5	15.4 7.00
5"	5.563 141.3	10.00 254.0	0.94 23.9	7.31 185.7	8	0.88 22.4	8.50 215.9	19.0 8.63
6"	6.625 168.3	11.00 279.4	1.00 25.4	8.50 215.9	8	0.88 22.4	9.50 241.3	24.9 11.3
8"	8.625 219.1	13.50 342.9	1.12 28.4	10.62 269.7	8	0.88 22.4	11.75 298.5	43.2 19.6
10"	10.75 273	16.00 406.4	1.19 30.2	12.75 323.9	12	1.00 25.4	14.25 362.0	63.4 28.8
12"	12.75 323.8	19.00 482.6	1.25 31.8	15.00 381.0	12	1.00 25.4	17.00 431.8	95.2 43.2
14"	14.0 355.6	21.00 533.4	1.38 35.1	16.25 412.8	12	1.12 28.4	18.75 476.3	128 58.1
16"	16.0 406.4	23.50 596.9	1.44 36.6	18.50 469.9	16	1.12 28.4	21.25 539.8	167 76.0
18"	18.0 457.2	25.00 635.0	1.56 39.6	21.00 533.4	16	1.25 31.8	22.75 577.9	206 93.7
20"	20.0 508	27.50 698.5	1.69 42.9	23.00 584.2	20	1.25 31.8	25.00 635.0	269 122
24"	24.0 609.6	32.00 812.8	1.88 47.8	27.25 692.2	20	1.38 35.1	29.50 749.3	408 185

300 lb/sq. in.

Blind Flanges

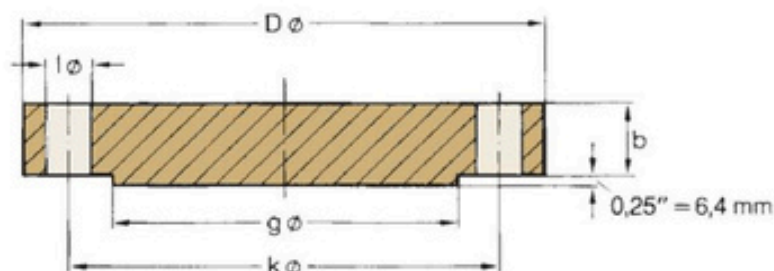


ASME B 16.5

Pipe		Flange		Raised Face	Drilling Template			Approx. Weight
Nominal Size	O D in. mm	D in. mm	b in. mm	g in. mm	Number	l in. mm	k in. mm	Pounds Kilo
1/2"	0.84 21.3	3.75 95.2	0.56 14.2	1.38 35.0	4	0.62 15.7	2.62 66.5	1.4 0.64
3/4"	1.05 26.7	4.62 117.3	0.62 15.7	1.69 42.9	4	0.75 19.0	3.25 82.5	2.4 1.11
1"	1.315 33.4	4.88 123.9	0.69 17.5	2.00 50.8	4	0.75 19.0	3.50 88.9	3.1 1.39
1 1/4"	1.66 42.2	5.25 133.3	0.75 19.0	2.50 63.5	4	0.75 19.0	3.88 98.5	3.9 1.79
1 1/2"	1.90 48.3	6.12 155.4	0.81 20.6	2.88 73.1	4	0.88 22.3	4.50 114.3	5.9 2.66
2"	2.375 60.3	6.50 165.1	0.88 22.3	3.62 91.9	8	0.75 19.0	5.00 127.0	7.0 3.18
2 1/2"	2.875 73.0	7.50 190.5	1.00 25.4	4.12 104.6	8	0.88 22.3	5.88 149.3	10.7 4.85
3"	3.50 88.9	8.25 209.5	1.12 28.4	5.00 127.0	8	0.88 22.3	6.62 168.1	15.0 6.81
3 1/2"	4.00 101.6	9.00 228.6	1.19 30.2	5.50 139.7	8	0.88 22.3	7.25 184.1	19.2 8.71
4"	4.50 114.3	10.00 254.0	1.25 31.7	6.19 157.2	8	0.88 22.3	7.88 200.1	25.3 11.5
5"	5.563 141.3	11.00 279.4	1.38 35.0	7.31 185.6	8	0.88 22.3	9.25 234.9	34.4 15.6
6"	6.625 168.3	12.50 317.5	1.44 36.5	8.50 215.9	12	0.88 22.3	10.62 269.7	46.0 20.9
8"	8.625 219.1	15.00 381.0	1.62 41.1	10.62 269.7	12	1.00 25.4	13.00 330.2	75.6 34.3
10"	10.75 273	17.50 444.5	1.88 47.7	12.75 323.8	16	1.12 28.4	15.25 387.3	117 53.3
12"	12.75 323.8	20.50 520.7	2.00 50.8	15.00 381.0	16	1.25 31.7	17.75 450.8	174 78.8
14"	14.0 355.6	23.00 584.2	2.12 53.8	16.25 412.7	20	1.25 31.7	20.25 514.3	231 105
16"	16.0 406.4	25.50 647.7	2.25 57.1	18.50 469.9	20	1.38 35.0	22.50 571.5	302 137
18"	18.0 457.2	28.00 711.2	2.38 60.4	21.00 533.4	24	1.38 35.0	24.75 628.6	386 175
20"	20.0 508	30.50 774.7	2.50 63.5	23.00 584.2	24	1.38 35.0	27.00 685.8	487 221
24"	24.0 609.6	36.00 914.4	2.75 69.8	27.25 692.1	24	1.62 41.1	32.00 812.8	747 339

600 lb/sq. in.

Blind Flanges



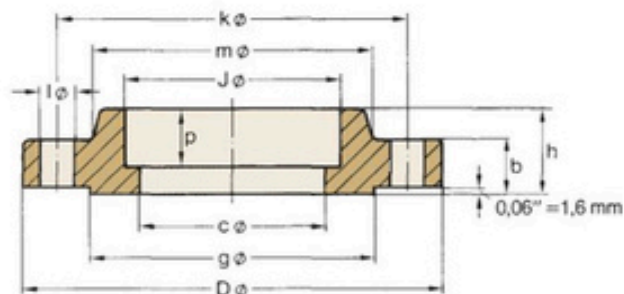
ASME B 16.5

Pipe		Flange		Raised Face	Drilling Template			Approx. Weight
Nominal Size	O D in. mm	D in. mm	b in. mm	g in. mm	Number	l in. mm	k in. mm	= Pounds Kilo
1/2"	0.84 21.3	3.75 95.3	0.56 14.2	1.38 35.1	4	0.62 15.7	2.62 66.5	1.7 0.76
3/4"	1.05 26.7	4.62 117.3	0.62 15.7	1.69 42.9	4	0.75 19.1	3.25 82.6	2.8 1.28
1"	1.315 33.4	4.88 124	0.69 17.5	2.00 50.8	4	0.75 19.1	3.50 88.9	3.5 1.60
1 1/4"	1.66 42.2	5.25 133.4	0.81 20.6	2.50 63.5	4	0.75 19.1	3.88 98.6	4.9 2.23
1 1/2"	1.90 48.3	6.12 155.4	0.88 22.4	2.88 73.2	4	0.88 22.4	4.50 114.3	7.2 3.25
2"	2.375 60.3	6.50 165.1	1.00 25.4	3.62 91.9	8	0.75 19.1	5.00 127.0	9.1 4.15
2 1/2"	2.875 73.0	7.50 190.5	1.12 28.4	4.12 104.6	8	0.88 22.4	5.88 149.4	13.5 6.13
3"	3.50 88.9	8.25 209.6	1.25 31.8	5.00 127.0	8	0.88 22.4	6.62 168.1	18.6 8.44
3 1/2"	4.00 101.6	9.00 228.6	1.38 35.1	5.50 139.7	8	1.00 25.4	7.25 184.2	24.2 11.0
4"	4.50 114.3	10.75 273.1	1.50 38.1	6.19 157.2	8	1.00 25.4	8.50 215.9	38.1 17.3
5"	5.563 141.3	13.00 330.2	1.75 44.5	7.31 185.7	8	1.12 28.4	10.50 266.7	64.8 29.4
6"	6.625 168.3	14.00 355.6	1.88 47.8	8.50 215.9	12	1.12 28.4	11.50 292.1	79.5 36.1
8"	8.625 219.1	16.50 419.1	2.19 55.6	10.62 269.7	12	1.25 31.8	13.75 349.3	130 58.9
10"	10.75 273	20.00 508.0	2.50 63.5	12.75 323.9	16	1.38 35.1	17.00 431.8	215 97.5
12"	12.75 323.8	22.00 558.8	2.62 66.5	15.00 381.0	20	1.38 35.1	19.25 489.0	273 124
14"	14.0 355.6	23.75 603.3	2.75 69.9	16.25 412.8	20	1.50 38.1	20.75 527.1	333 151
16"	16.0 406.4	27.00 685.8	3.00 76.2	18.50 469.9	20	1.62 41.1	23.75 603.3	471 214
18"	18.0 457.2	29.25 743.0	3.25 82.6	21.00 533.4	20	1.75 44.5	25.75 654.1	599 272
20"	20.0 508	32.00 812.8	3.50 88.9	23.00 584.2	24	1.75 44.5	28.50 723.9	769 349
24"	24.0 609.6	37.00 939.8	4.00 101.6	27.25 692.2	24	2.00 50.8	33.00 838.2	1174 533



SOCKET WELDING FLANGES

150 lb/sq. in. Socket Welding Flanges



ASME B 16.5

Pipe		Flange						Hub	Raised Face	Drilling Template			Approx. Weight
Nom. Size	O D in. mm	D in. mm	J in. mm	c in. mm	p in. mm	b in. mm	h in. mm	m in. mm	g in. mm	Number	l in. mm	k in. mm	= Pounds Kilo
1/2"	0,84 21,3	3,50 88,9	0,88 22,4	0,62 15,7	0,38 9,7	0,44 11,2	0,62 15,7	1,19 30,2	1,38 35,1	4	0,62 15,7	2,38 60,5	0,9 0,42
3/4"	1,05 26,7	3,88 98,6	1,09 27,7	0,82 20,8	0,44 11,2	0,50 12,7	0,62 15,7	1,50 38,1	1,69 42,9	4	0,62 15,7	2,75 69,9	1,3 0,59
1"	1,315 33,4	4,25 108,0	1,36 34,5	1,05 26,7	0,50 12,7	0,56 14,2	0,69 17,5	1,94 49,3	2,00 50,8	4	0,62 15,7	3,12 79,2	1,8 0,81
1 1/4"	1,66 42,2	4,62 117,3	1,70 43,2	1,38 35,1	0,56 14,2	0,62 15,7	0,81 20,6	2,31 58,7	2,50 63,5	4	0,62 15,7	3,50 88,9	2,4 1,07
1 1/2"	1,90 48,3	5,00 127,0	1,95 49,5	1,61 40,9	0,62 15,7	0,69 17,5	0,88 22,4	2,56 65,0	2,88 73,2	4	0,62 15,7	3,88 98,6	3,00 1,36
2"	2,375 60,3	6,00 152,4	2,44 62,0	2,07 52,6	0,69 17,5	0,75 19,1	1,00 25,4	3,06 77,7	3,62 91,9	4	0,75 19,1	4,75 120,7	4,6 2,10
2 1/2"	2,875 73,0	7,00 177,8	2,94 74,7	2,47 62,7	0,75 19,1	0,88 22,4	1,12 28,4	3,56 90,4	4,12 104,6	4	0,75 19,1	5,50 139,7	7,3 3,33
3"	3,50 88,9	7,50 190,5	3,57 90,7	3,07 78,0	0,81 20,6	0,94 23,9	1,19 30,2	4,25 108,0	5,00 127,0	4	0,75 19,1	6,00 152,4	8,6 3,90

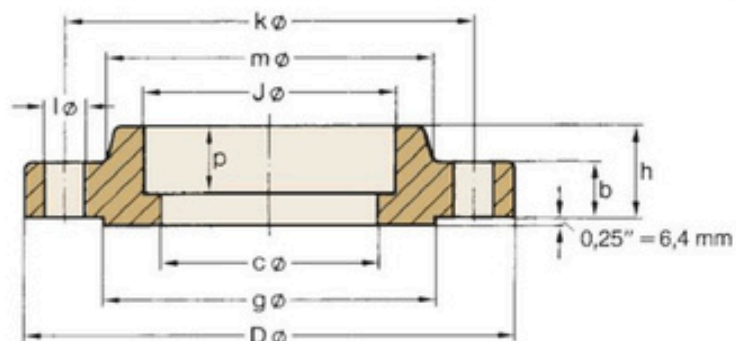
300 lb/sq. in. Socket Welding Flanges

ASME B 16.5

Pipe		Flange						Hub	Raised Face	Drilling Template			Approx. Weight
Nom. Size	O D in. mm	D in. mm	J in. mm	c in. mm	p in. mm	b in. mm	h in. mm	m in. mm	g in. mm	Number	l in. mm	k in. mm	= Pounds Kilo
1/2"	0,84 21,3	3,75 95,2	0,88 22,3	0,62 15,7	0,38 9,6	0,56 14,2	0,88 22,3	1,50 38,1	1,38 35,0	4	0,62 15,7	2,62 66,5	1,5 0,66
3/4"	1,05 26,7	4,62 117,3	1,09 27,7	0,82 20,8	0,44 11,1	0,62 15,7	1,00 25,4	1,88 47,7	1,69 42,9	4	0,75 19,0	3,25 82,5	2,5 1,15
1"	1,315 33,4	4,88 123,9	1,36 34,5	1,05 26,7	0,50 12,7	0,69 17,5	1,06 26,9	2,12 53,8	2,00 50,8	4	0,75 19,0	3,50 88,9	3,1 1,40
1 1/4"	1,66 42,2	5,25 133,3	1,70 43,2	1,38 35,0	0,56 14,2	0,75 19,0	1,06 26,9	2,50 63,5	2,50 63,5	4	0,75 19,0	3,88 98,5	3,9 1,75
1 1/2"	1,90 48,3	6,12 155,4	1,95 49,5	1,61 40,9	0,62 15,7	0,81 20,6	1,19 30,2	2,75 69,8	2,88 73,1	4	0,88 22,3	4,50 114,3	5,6 2,55
2"	2,375 60,3	6,50 165,1	2,44 62,0	2,07 52,6	0,69 17,5	0,88 22,3	1,31 33,2	3,31 84,0	3,62 91,9	8	0,75 19,0	5,00 127,0	6,5 2,93
2 1/2"	2,875 73,0	7,50 190,5	2,94 74,7	2,47 62,7	0,75 19,0	1,00 25,4	1,50 38,1	3,94 100,0	4,12 104,6	8	0,88 22,3	5,88 149,3	9,7 4,40
3"	3,50 88,9	8,25 209,5	3,57 90,7	3,07 78,0	0,81 20,5	1,12 28,4	1,69 42,9	4,62 117,3	5,00 127,0	8	0,88 22,3	6,62 168,1	13,0 5,92

600 lb/sq. in. Socket Welding Flanges

ASME B 16.5

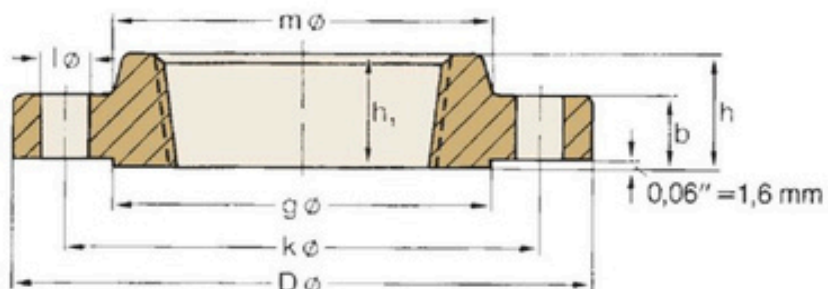


Pipe		Flange						Hub	Raised Face	Drilling Template			Approx. Weight
Nom. Size	O D in. mm	D in. mm	J in. mm	c in. mm	p in. mm	b in. mm	h in. mm	m in. mm	g in. mm	Number	l in. mm	k in. mm	= Pounds Kilo
1/2"	0.84 21.3	3.75 95.3	0.88 22.4	To be specified by purchaser	0.38 9.7	0.56 14.2	0.88 22.4	1.50 38.1	1.38 35.1	4	0.62 15.7	2.62 66.5	1.7 0.76
3/4"	1.05 26.7	4.62 117.3	1.09 27.7		0.44 11.2	0.62 15.7	1.00 25.4	1.88 47.8	1.69 42.9	4	0.75 19.1	3.25 82.6	2.8 1.29
1"	1.315 33.4	4.88 124.0	1.36 34.5		0.50 12.7	0.69 17.5	1.06 26.9	2.12 53.8	2.00 50.8	4	0.75 19.1	3.50 88.9	3.4 1.55
1 1/4"	1.66 42.2	5.25 133.4	1.70 43.2		0.56 14.2	0.81 20.6	1.12 28.4	2.50 63.5	2.50 63.5	4	0.75 19.1	3.88 98.6	4.5 2.06
1 1/2"	1.90 48.3	6.12 155.4	1.95 49.5		0.62 15.7	0.88 22.4	1.25 31.8	2.75 69.9	2.88 73.2	4	0.88 22.4	4.50 114.3	6.6 3.00
2"	2.375 60.3	6.50 165.1	2.44 62.0		0.69 17.5	1.00 25.4	1.44 36.6	3.31 84.1	3.62 91.9	8	0.75 19.1	5.00 127.0	8.1 3.67
2 1/2"	2.875 73.0	7.50 190.5	2.94 74.7		0.75 19.1	1.12 28.4	1.62 41.1	3.94 100.1	4.12 104.6	8	0.88 22.4	5.88 149.4	11.8 5.35
3"	3.50 88.9	8.25 209.6	3.57 90.7		0.81 20.6	1.25 31.8	1.81 46.0	4.62 117.3	5.00 127.0	8	0.88 22.4	6.62 168.1	15.6 7.06



THREADED FLANGES

150 lb/sq. in. Threaded Flanges

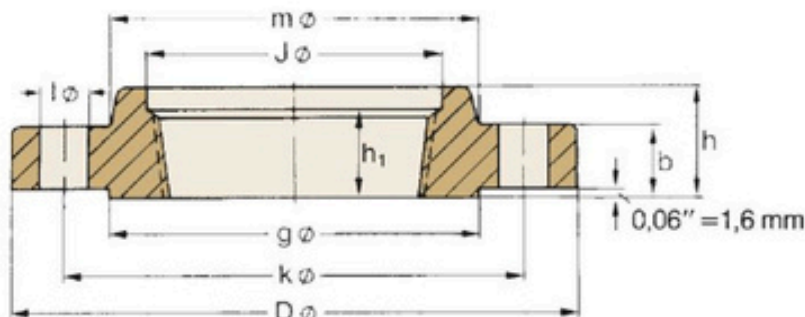


Thread type: Standard taper pipe thread to ANSI B 2.1

ASME B 16.5

Pipe		Flange				Hub	Raised Face	Drilling Template			Approx. Weight
Nom. Size	OD in. mm	D in. mm	J in. mm	b in. mm	h/h ₁ in. mm	m in. mm	g in. mm	Number	l in. mm	k in. mm	= Pounds Kilo
1/2"	0.84 21.3	3.50 88.9	No Counter Bore Required on 150 lb Threaded Flanges	0.44 11.2	0.62 15.7	1.19 30.2	1.38 35.1	4	0.62 15.7	2.38 60.5	0.9 0.39
3/4"	1.05 26.7	3.88 98.6		0.50 12.7	0.62 15.7	1.50 38.1	1.69 42.9	4	0.62 15.7	2.75 69.9	1.2 0.56
1"	1.315 33.4	4.25 108.0		0.56 14.2	0.69 17.5	1.94 49.3	2.00 50.8	4	0.62 15.7	3.12 79.2	1.7 0.78
1 1/4"	1.66 42.2	4.62 117.3		0.62 15.7	0.81 20.6	2.31 58.7	2.50 63.5	4	0.62 15.7	3.50 88.9	2.3 1.03
1 1/2"	1.90 48.3	5.00 127.0		0.69 17.5	0.88 22.4	2.56 65.0	2.88 73.2	4	0.62 15.7	3.88 98.6	2.9 1.32
2"	2.375 60.3	6.00 152.4		0.75 19.1	1.00 25.4	3.06 77.7	3.62 91.9	4	0.75 19.1	4.75 120.7	4.5 2.06
2 1/2"	2.875 73.0	7.00 177.8		0.88 22.4	1.12 28.4	3.56 90.4	4.12 104.6	4	0.75 19.1	5.50 139.7	7.2 3.28
3"	3.50 88.9	7.50 190.5		0.94 23.9	1.19 30.2	4.25 108.0	5.00 127.0	4	0.75 19.1	6.00 152.4	8.5 3.85
3 1/2"	4.00 101.6	8.50 215.9		0.94 23.9	1.25 31.8	4.81 122.2	5.50 139.7	8	0.75 19.1	7.00 177.8	10.6 4.81
4"	4.50 114.3	9.00 228.6		0.94 23.9	1.31 33.3	5.31 134.9	6.19 157.2	8	0.75 19.1	7.50 190.5	11.7 5.30
5"	5.563 141.3	10.00 254.0		0.94 23.9	1.44 36.6	6.44 163.6	7.31 185.7	8	0.88 22.4	8.50 215.9	13.4 6.07
6"	6.625 168.3	11.00 279.4		1.00 25.4	1.56 39.6	7.56 192.0	8.50 215.9	8	0.88 22.4	9.50 241.3	16.4 7.45
8"	8.625 219.1	13.50 342.9		1.12 28.4	1.75 44.5	9.69 246.1	10.62 269.7	8	0.88 22.4	11.75 298.5	26.7 12.1
10"	10.75 273	16.00 406.4		1.19 30.2	1.94 49.3	12.00 304.8	12.75 323.9	12	1.00 25.4	14.25 362.0	36.3 16.5
12"	12.75 323.8	19.00 482.6		1.25 31.8	2.19 55.6	14.38 365.3	15.00 381.0	12	1.00 25.4	17.00 431.8	57.7 26.2
14"	14.0 355.6	21.00 533.4		1.38 35.1	2.25 57.2	15.75 400.1	16.25 412.8	12	1.12 28.4	18.75 476.3	76.2 34.6
16"	16.0 406.4	23.50 596.9		1.44 36.6	2.50 63.5	18.00 457.2	18.50 469.9	16	1.12 28.4	21.25 539.8	98.7 44.8
18"	18.0 457.2	25.00 635.0		1.56 39.6	2.69 68.3	19.88 505.0	21.00 533.4	16	1.25 31.8	22.75 577.9	108 48.9
20"	20.0 508	27.50 698.5		1.69 42.9	2.88 73.2	22.00 558.8	23.00 584.2	20	1.25 31.8	25.00 635.0	136 61.9
24"	24.0 609.6	32.00 812.8		1.88 47.8	3.25 82.6	26.12 663.4	27.25 692.2	20	1.38 35.1	29.50 749.3	191 86.9

300 lb/sq. in. Threaded Flanges



Thread type: Standard taper pipe thread to ANSI B 2.1

ASME B 16.5

Pipe		Flange					Hub	Raised Face	Drilling Template			Approx. Weight
Nom. Size	O D in. mm	D in. mm	J in. mm	b in. mm	h in. mm	h ₁ in. mm	m in. mm	g in. mm	Number	l in. mm	k in. mm	= Pounds Kilo
1/2"	0.84 21.3	3.75 95.2	0.93 23.6	0.56 14.2	0.88 22.3	0.62 15.7	1.50 38.1	1.38 35.0	4	0.62 15.7	2.62 66.5	1.4 0.64
3/4"	1.05 26.7	4.62 117.3	1.14 29.0	0.62 15.7	1.00 25.4	0.62 15.7	1.88 47.7	1.69 42.9	4	0.75 19.0	3.25 82.5	2.5 1.12
1"	1.315 33.4	4.88 123.9	1.41 35.8	0.69 17.5	1.06 26.9	0.69 17.5	2.12 53.8	2.00 50.8	4	0.75 19.0	3.50 88.9	3.0 1.36
1 1/4"	1.66 42.2	5.25 133.3	1.75 44.4	0.75 19.0	1.06 26.9	0.81 20.5	2.50 63.5	2.50 63.5	4	0.75 19.0	3.88 98.5	3.7 1.68
1 1/2"	1.90 48.3	6.12 155.4	1.99 50.5	0.81 20.6	1.19 30.2	0.88 22.3	2.75 69.8	2.88 73.1	4	0.88 22.3	4.50 114.3	5.5 2.49
2"	2.375 60.3	6.50 165.1	2.50 63.5	0.88 22.3	1.31 33.2	1.12 28.4	3.31 84.0	3.62 91.9	8	0.75 19.0	5.00 127.0	6.3 2.87
2 1/2"	2.875 73.0	7.50 190.5	3.00 76.2	1.00 25.4	1.50 38.1	1.25 31.7	3.94 100.0	4.12 104.6	8	0.88 22.3	5.88 149.3	9.5 4.32
3"	3.50 88.9	8.25 209.5	3.63 92.2	1.12 28.4	1.69 42.9	1.25 31.7	4.62 117.3	5.00 127.0	8	0.88 22.3	6.62 168.1	12.9 5.85
3 1/2"	4.00 101.6	9.00 228.6	4.13 104.9	1.19 30.2	1.75 44.4	1.44 36.5	5.25 133.3	5.50 139.7	8	0.88 22.3	7.25 184.1	16.2 7.34
4"	4.50 114.3	10.00 254.0	4.63 117.6	1.25 31.7	1.88 47.7	1.44 36.5	5.75 146.0	6.19 157.2	8	0.88 22.3	7.88 200.1	21.2 9.61
5"	5.563 141.3	11.00 279.4	5.69 144.5	1.38 35.0	2.00 50.8	1.69 42.9	7.00 177.8	7.31 185.6	8	0.88 22.3	9.25 234.9	27.1 12.3
6"	6.625 168.3	12.50 317.5	6.75 171.4	1.44 36.5	2.06 52.3	1.81 45.9	8.12 206.2	8.50 215.9	12	0.88 22.3	10.62 269.7	34.4 15.6
8"	8.625 219.1	15.00 381.0	8.75 222.2	1.62 41.1	2.44 61.9	2.00 50.8	10.25 260.3	10.62 269.7	12	1.00 25.4	13.00 330.2	53.3 24.2
10"	10.75 273	17.50 444.5	10.88 276.3	1.88 47.7	2.62 66.5	2.19 55.6	12.62 320.5	12.75 323.8	16	1.12 28.4	15.25 387.3	75.1 34.1
12"	12.75 323.8	20.50 520.7	12.94 328.7	2.00 50.8	2.88 73.1	2.38 60.4	14.75 374.6	15.00 381.0	16	1.25 31.7	17.75 450.8	110 49.8
14"	14.0 355.6	23.00 584.2	14.19 360.4	2.12 53.8	3.00 76.2	2.50 63.5	16.75 425.4	16.25 412.7	20	1.25 31.7	20.25 514.3	154 69.9
16"	16.0 406.4	25.50 647.7	16.19 411.2	2.25 57.1	3.25 82.5	2.69 68.3	19.00 482.6	18.50 469.9	20	1.38 35.0	22.50 571.5	194 88.1
18"	18.0 457.2	28.00 711.2	18.19 462	2.38 60.4	3.50 88.9	2.75 69.8	21.00 533.4	21.00 533.4	24	1.38 35.0	24.75 628.6	240 109
20"	20.0 508	30.50 774.7	20.19 512.8	2.50 63.5	3.75 95.2	2.88 73.1	23.12 587.2	23.00 584.2	24	1.38 35.0	27.00 685.8	295 134
24"	24.0 609.6	36.00 914.4	24.19 614.4	2.75 69.8	4.19 106.4	3.25 82.5	27.62 701.5	27.25 692.2	24	1.62 41.1	32.00 812.8	443 201

FLANGES WE OFFER



SLIP-ON



THREADED



BLIND



**SOCKET
WELD**



**WELDING
NECK**

STANDARDS:

ASTM A105 , API, ASME, AND ANSI B16.5

- size: 1/4" - 48"
- Thickness: Class 150 -2,500
- All Items will have an accompanying Mill Test Certificate upon request

APPLICATIONS:

- Industrial
- Residential
- Petrochemical Plants
- Oil & Gas
- Refineries
- Sugar Mills
- Energy
- Construction & Infrastructure
- Chemicals
- Machineries
- Boilers
- Food & Beverage
- Shipping
- Desalination Plant
- Power Plants
- Automotive & Transport
- High-Pressure Vessel

WHY CHOOSE US?

1 RELIABLE

Since 1961, We have been a trusted vendor for some of the Philippines' biggest companies across sectors in Oil Refinery, Petroleum, Geothermal, LNG, LPG, Power/Energy, Chemical, Sugar Mill, Food/Beverage, Distillery & International Sub-Contractors.

2 COMPETITIVE PRICING

As a Direct Importer, Wholesaler, Retailer, Stockist, and Exclusive Agent, we can offer our clients the most competitive of prices in an ever changing market.

3 QUALITY PRODUCTS

We carry a wide range of materials that conforms to various International Standards such as ASME, ANSI, WRAS, BSI, and ULFM.



+63-939-913-0553,
+63-917-850-4147
Fax: +63(2) 8244-1234
Tel.: +63(2) 8244-7061 to 68

For Inquiries:
sales10@upcc.com.ph
For Concerns:
tiugregian@upcc1.com

7th floor, Banawe Lifestyle Center Building, 86 Banawe St., Brgy. Sto. Domingo, Quezon City, Philippines

