

KITZ

Brochure



KITZ

CLASS 150 CAST STEEL GATE VALVE FLANGED ENDS

KITZ Fig: 150SCLS

Sizes: 11/2-24inch(40-600mm)

BOLTED BONNET, OUTSIDE SCREW & YOKE.

Standards

- End to End: ASME B16.10 CLASS 150
- End Connection: ASME B16.5 CLASS 150
- Wall Thickness: API 600 CLASS 150
- Test Standard
- API 598

Dimensions

SIZE(inch/mm)		L	L1	H	D1	Kg
11/2	40	165.0	0.0	385.0	200.0	0.00
2	50	178.0	0.0	385.0	200.0	0.00
2 1/2	65	190.0	0.0	432.0	200.0	0.00
3	80	203.0	0.0	506.0	250.0	0.00
4	100	229.0	0.0	589.0	250.0	0.00
5	125	254.0	0.0	658.0	300.0	63.00
6	150	267.0	0.0	755.0	300.0	0.00
8	200	292.0	0.0	955.0	350.0	0.00
10	250	330.0	0.0	1158.0	400.0	0.00
12	300	356.0	0.0	1358.0	450.0	0.00
14	350					
16	400	406.0	0.0	1690.0	600.0	0.00
18	450	432.0	0.0	1903.0	680.0	0.00
20	500	457.0	0.0	2118.0	680.0	0.00
24	600	508.0	0.0	2493.0	760.0	0.00

Material List

NAME OF PART	MATERIAL	SPECIFICATION
BODY	CAST STEEL	A216 Gr. WCB/SCPH2
BONNET	CAST STEEL	A216 Gr. WCB/SCPH2
STEM	STAINLESS STEEL	403SS
DISC	STAINLESS STEEL	A217 Gr. CA15

Specifications

CLASS 150 CAST STEEL GATE VALVE FLANGED ENDS, BOLTED BONNET, OUTSIDE SCREW & YOKE.

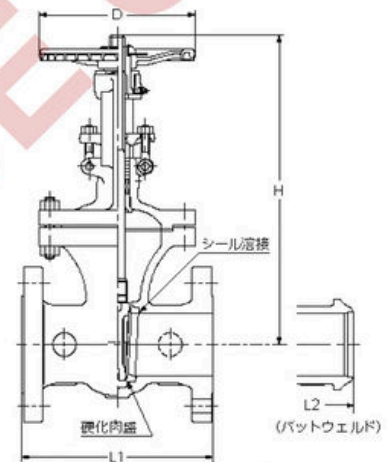
End to End : ASME B16.10 CLASS 150, End Connection : ASME B16.5

CLASS 150, Wall Thickness : API 600 CLASS 150, Test Standard : API

598, Sizes : 11/2-24inch(40-600mm), BODY MATERIAL : CAST

STEEL, BONNET MATERIAL : CAST STEEL, STEM MATERIAL : STAINLESS

STEEL, DISC MATERIAL : STAINLESS STEEL, KITZ Fig : 150SCLS



For more details, please refer to the drawing.

CLASS 150 CAST STEEL SWING CHECK VALVE FLANGED ENDS

KITZ Fig: 150SC0S

Sizes: 11/2-24inch(40-600mm)

BOLTED COVER

Standards

- End to End: ASME B16.10 CLASS 150
- End Connection: ASME B16.5 CLASS 150
- Wall Thickness: API 600 CLASS 150

Test Standard

- API 598

Dimensions

SIZE(inch/mm)	L	L1	H	D1	Kg
11/2 40	165.0	0.0	132.0	0.0	0.00
2 50	203.0	0.0	156.0	0.0	0.00
2 1/2 65	216.0	0.0	168.0	0.0	0.00
3 80	241.0	0.0	185.0	0.0	0.00
4 100	292.0	0.0	210.0	0.0	0.00
5 125	330.0	0.0	239.0	0.0	0.00
6 150	356.0	0.0	250.0	0.0	0.00
8 200	495.0	0.0	293.0	0.0	0.00
10 250	622.0	0.0	340.0	0.0	0.00
12 300	698.0	0.0	377.0	0.0	0.00
14 350	787.0	0.0	415.0	0.0	0.00
16 400	864.0	0.0	455.0	0.0	0.00
18 450	978.0	0.0	508.0	0.0	0.00
20 500	978.0	0.0	585.0	0.0	0.00
24 600	1295.0	0.0	670.0	0.0	0.00

Material List

NAME OF PART	MATERIAL	SPECIFICATION
BODY	CAST STEEL	A216 Gr. WCB/SCPH2
COVER	CAST STEEL	A216 Gr. WCB/SCPH2
DISC	STAINLESS STEEL	A216 Gr. WCB/SCPH2+13Cr

Specifications

CLASS 150 CAST STEEL SWING CHECK VALVE FLANGED ENDS, BOLTED COVER

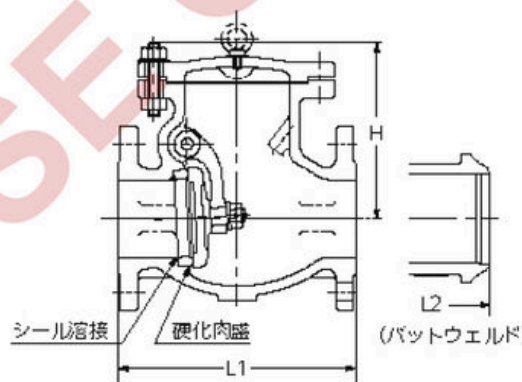
End to End : ASME B16.10 CLASS 150, End Connection : ASME B16.5

CLASS 150, Wall Thickness : API 600 CLASS 150, Test Standard : API

598, Sizes : 11/2-24inch(40-600mm), BODY MATERIAL : CAST

STEEL, COVER MATERIAL : CAST STEEL, DISC MATERIAL : STAINLESS STEEL, KITZ

Fig : 150SC0S



For more details, please refer to the drawing.

CLASS 150 CAST STEEL BALL VALVE FLANGED ENDS

KITZ Fig: 150SCTDZ1H

Sizes: 1/2-4inch(15-100mm)

HIGH TEMPERATURE SERVICE, FILLTITE SEAT, ANTI-STATIC DEVICE, FULL BORE, CONFORM TO ISO5211.

Standards

- End to End: ASME B16.10 CLASS 150
- End Connection: ASME B16.5 CLASS 150
- Wall Thickness: ASME B16.34 CLASS 150

Test Standard

- API 598

Dimensions

SIZE (inch/mm)	L	L1	H	D1	Kg
1/2 15	108.0	0.0	108.0	130.0	0.00
3/4 20	117.0	0.0	111.0	130.0	0.00
1 25	127.0	0.0	124.0	160.0	0.00
1 1/2 40	165.0	0.0	135.0	230.0	0.00
2 50	178.0	0.0	143.0	230.0	0.00
2 1/2 65	190.0	0.0	179.0	400.0	0.00
3 80	203.0	0.0	188.0	400.0	0.00
4 100	229.0	0.0	251.0	750.0	0.00

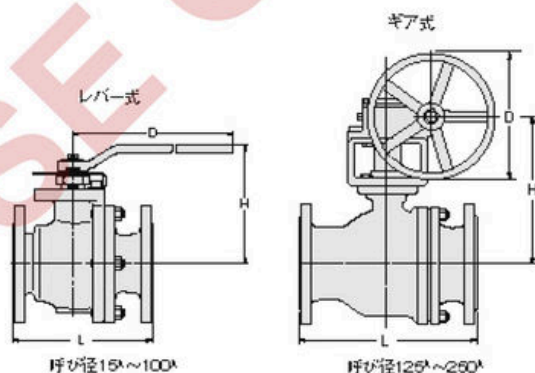
Material List

NAME OF PART	MATERIAL	SPECIFICATION
BODY	CAST STEEL	A216 Gr. WCB/SCPH2
BODY CAP	CAST STEEL	A216 Gr. WCB/SCPH2
STEM	STAINLESS STEEL	304SS
BALL	STAINLESS STEEL	A351 Gr. CF8/SCS13A

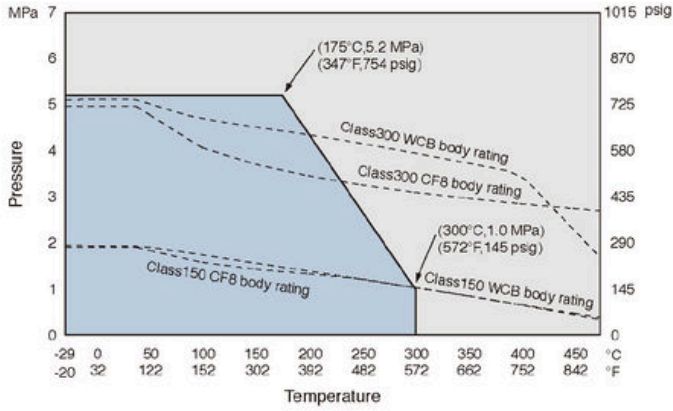
Specifications

CLASS 150 CAST STEEL BALL VALVE FLANGED ENDS, HIGH TEMPERATURE SERVICE, FILLTITE SEAT, ANTI-STATIC DEVICE, FULL BORE, CONFORM TO ISO5211.

End to End : ASME B16.10 CLASS 150, End Connection : ASME B16.5 CLASS 150, Wall Thickness : ASME B16.34 CLASS 150, Test Standard : API 598, Sizes : 1/2-4inch(15-100mm), BODY MATERIAL : CAST STEEL, BODY CAP MATERIAL : CAST STEEL, STEM MATERIAL : STAINLESS STEEL, BALL MATERIAL : STAINLESS STEEL, KITZ Fig : 150SCTDZ1H



For more details, please refer to the drawing.



Pressure-temperature ratings and other performance data published in this catalog have been developed from our design calculation, in-house testing, field reports provided by our customers and/or published official standards or specifications. They are good only to cover typical applications as a general guideline to users of KITZ products introduced in this catalog. For any specific application, users are kindly requested to contact KITZ Corporation for technical advice, or to carry out their own study and evaluation for proving suitability of these products to such an application. Failure to follow this request could result in property damage and/or personal injury, for which we shall not be liable. Read instruction manual carefully before use.



GATE



CHECK



BALL



Y-STRAINER



GLOBE

STANDARDS:

ASTM A105 , API, ASME, AND ANSI B16.5

- size: 1/4" - 48"
- Thickness: Class 150 -2,500
- All Items will have an accompanying Mill Test Certificate upon request

APPLICATIONS:

- Industrial
- Residential
- Petrochemical Plants
- Oil & Gas
- Refineries
- Sugar Mills
- Energy

- Construction & Infrastructure
- Chemicals
- Machineries
- Boilers
- Food & Beverage
- Shipping
- Desalination Plant
- Power Plants

- Automotive & Transport
- High-Pressure Vessel

WHY CHOOSE US?

1 RELIABLE

Since 1961, We have been a trusted vendor for some of the Philippines' biggest companies across sectors in Oil Refinery, Petroleum, Geothermal, LNG, LPG, Power/Energy, Chemical, Sugar Mill, Food/Beverage, Distillery & International Sub-Contractors.

2 COMPETITIVE PRICING

As a Direct Importer, Wholesaler, Retailer, Stockist, and Exclusive Agent, we can offer our clients the most competitive of prices in an ever changing market.

3 QUALITY PRODUCTS

We carry a wide range of materials that conforms to various International Standards such as ASME, ANSI, WRAS, BSI, and ULFM.



KITZ